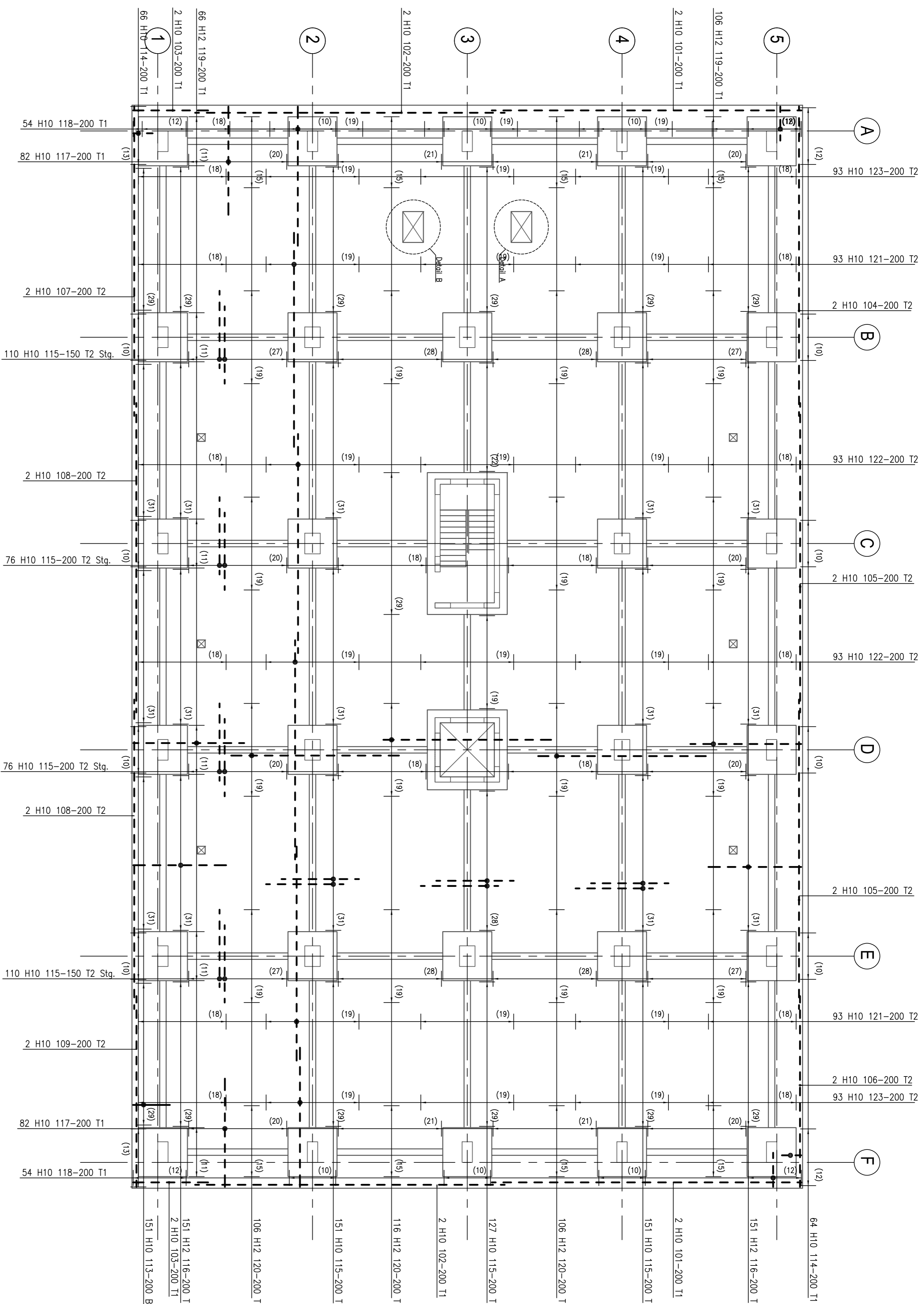
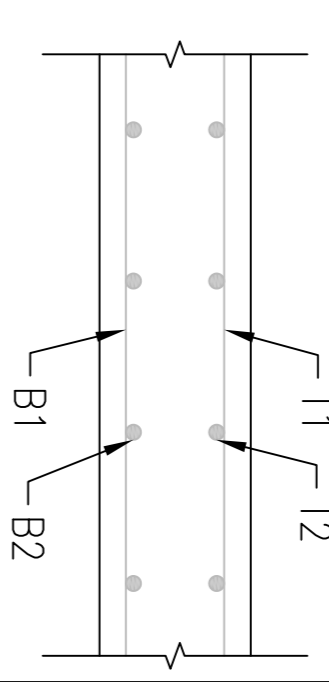


Total reinforcement weight on this drawing 8,869 tonnes

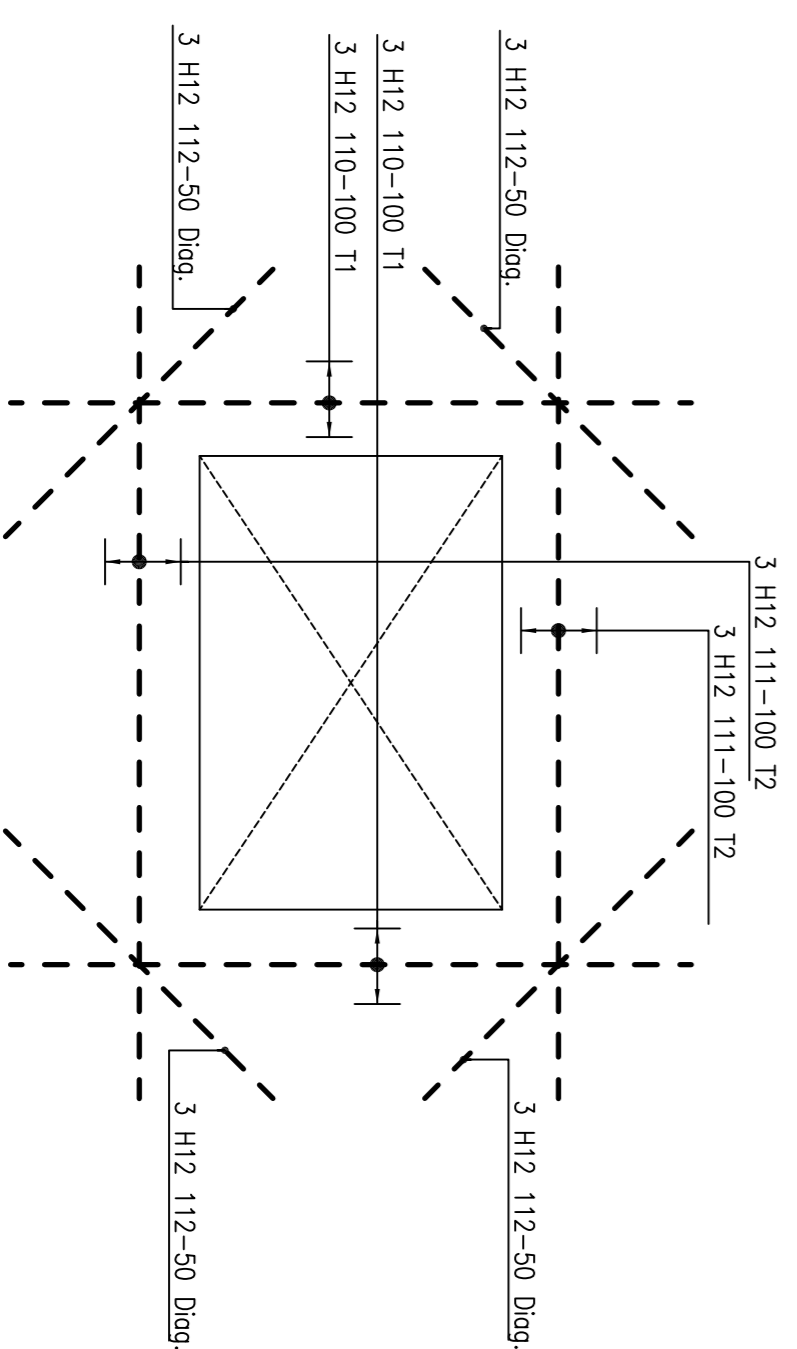
© J&A Theophilou Consulting Engineers (UK) Ltd
The contents of this drawing may not be reproduced in whole or in part without the prior written permission of J&A Theophilou Consulting Engineers (UK) Ltd.

Notes

- This drawing is to be read in conjunction with all relevant Architects, Engineers and Sub-Contractor drawings, and technical specifications.
- Concrete shall be grade C32/40.
- Maximum aggregate size shall be 20mm.
- Concrete cover shall be 30mm throughout.
- Reinforcement steel shall conform to the specifications of BS 4449.
- Reinforcement listed on bar bending schedule 1200-001.
- Abbreviations:
All Alternatives placed
B1 Bottom outer layer
B2 Bottom inner layer
T1 Top outer layer
T2 Top inner layer
Sfg. Staggered
UB U-Bars
- Reinforcement laps shall only be provided where indicated on the drawings or after written permission by the Consulting Structural Engineer. The minimum length of the laps shall be 40 x bar diameter.
- Contractor shall ensure the temporary stability of all members during construction works.
- Spacers and chairs shall be provided in accordance to BS 7973.
- Reinforcement bars to be locally adjusted for openings up to 500mm.
- In case of any discrepancies between the drawing details or bills, refer to Engineers for clarification. Unilateral decisions by the Contractor are not acceptable.



1 Ground Floor Plan - Level 0
Scale: 1:100



2 Details A&B
Scale: 1:20

Status	Date	Revision
Preliminary	21/03/2018	P1

Revision	Date	Description
P1	21/03/2018	Preliminary
Drawing History		
Design Organisation		

J&A THEOPHILOU
CONSULTING ENGINEERS (UK) LTD

46-48 East Smithfield, London, E1W 1AW
E: aisenj@theophilou.com, W: www.theophilou.com

Client
London Constructions

Paper Size	Scale	Drawn by	Checked by
A1	As Shown	AT	JT
Project Name			
Six Story Building			
Drawing Title			
RC Details to Ground Floor Slab - Level 0			
Top Reinforcement			
J&T Drawing Number			
1200-36			
Client Drawing Number			