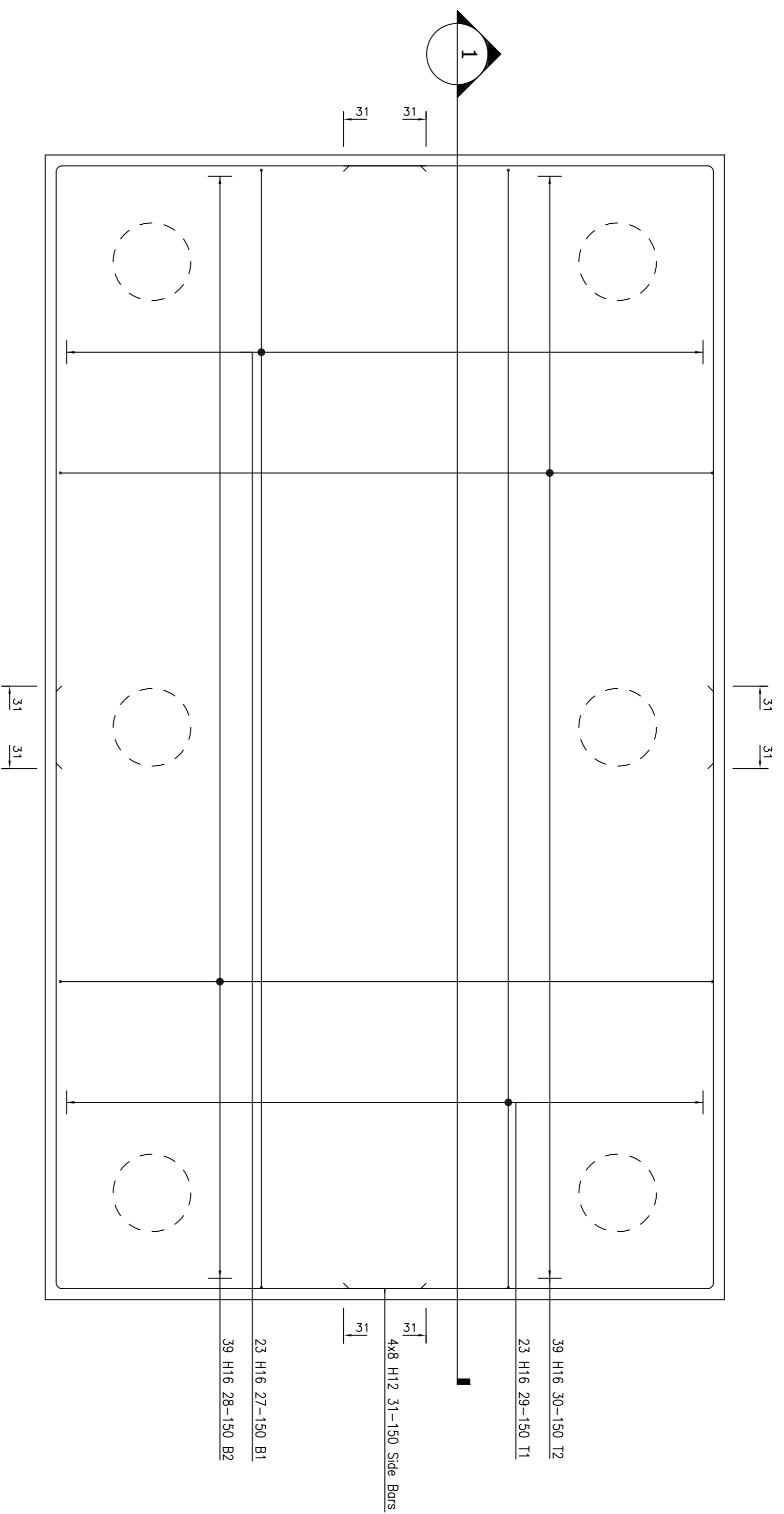


Total reinforcement weight on this drawing 1.281 tonnes

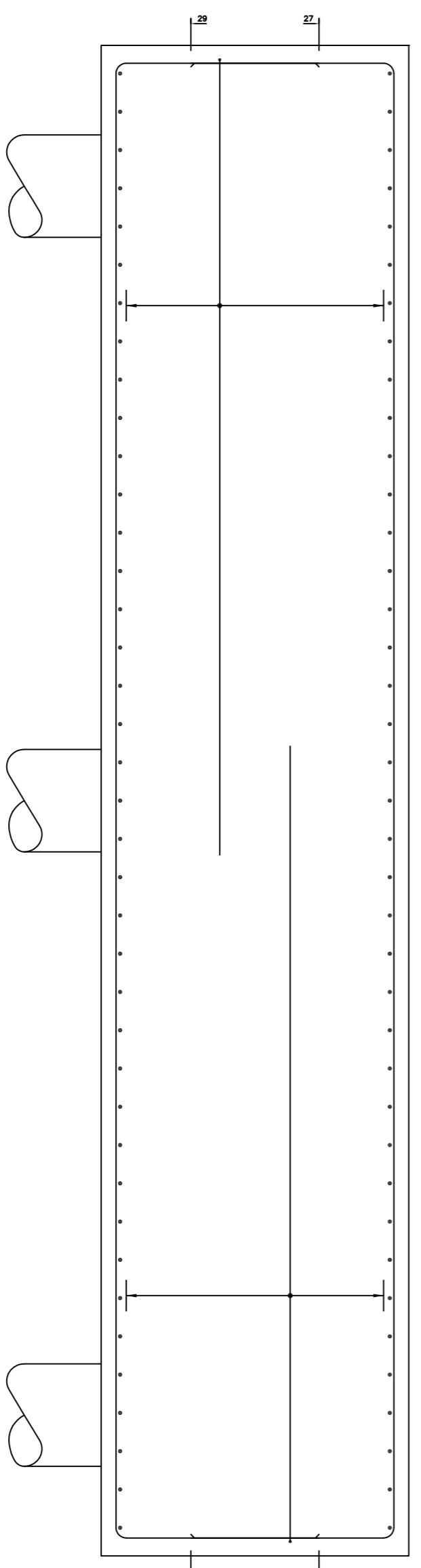
© J&A Theophilou Consulting Engineers (UK) Ltd  
The contents of this drawing may not be reproduced in whole or in part without the prior written permission of J&A Theophilou Consulting Engineers (UK) Ltd.

Notes

- This drawing is to be read in conjunction with all relevant Architects, Engineers and Sub-Contractor drawings and technical specifications.
- Concrete shall be grade C32/40.
- Maximum aggregate size shall be 20mm.
- Concrete cover shall be 30mm throughout.
- Reinforcement steel shall conform to the specifications of BS 4449.
- Reinforcement listed on bar bending schedule 1200-001.
- Abbreviations:  
All Alternatively placed  
B1 Bottom outer layer  
B2 Bottom inner layer  
T1 Top outer layer  
T2 Top inner layer  
Sg. Staggered  
UB U-Bars
- Reinforcement laps shall only be provided where indicated on the drawings, or after written permission by the Consulting Structural Engineer. The minimum length of the laps shall be 40 x bar diameter.
- Contractor shall ensure the temporary stability of all members during construction works.
- Spacers and chairs shall be provided in accordance to BS 7973.
- Reinforcement bars to be locally adjusted for openings up to 500mm.
- In case of any discrepancies between the drawing details or bills, refer to Engineers for clarification. Unilateral decisions by the Contractor are not acceptable.



1 Pile Cap PCB - Plan  
Scale: 1:10



2 Section 1-1  
Scale: 1:10

Revision	Date	Description
P1	18/03/2018	Preliminary

Drawing History

Design Organisation



46-48 East Smithfield, London, E1W 1AW  
E: ajseng@theophilou.com, W: www.theophilou.com

Client  
London Constructions

Paper Size	Scale	Drawn by	Checked by
A1	As Shown	AT	JT

Project Name  
Six Story Building

Drawing Title  
RC Details to Foundations - Level -1  
Pile Cap PCB

J&A Drawing Number  
1200-31

Client Drawing Number

Status	Date	Revision
Preliminary	21/03/2018	P1