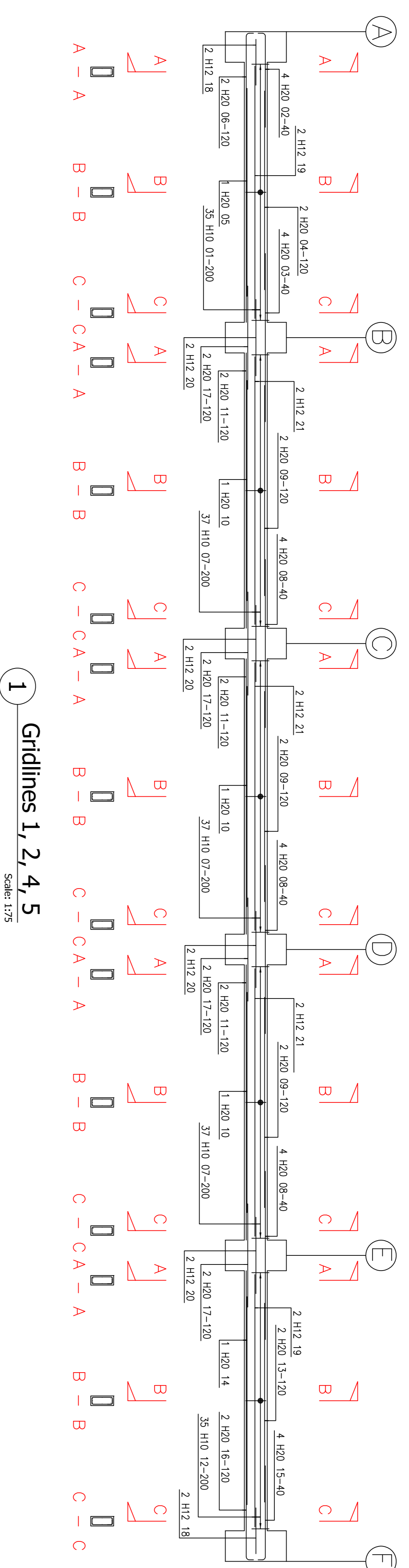
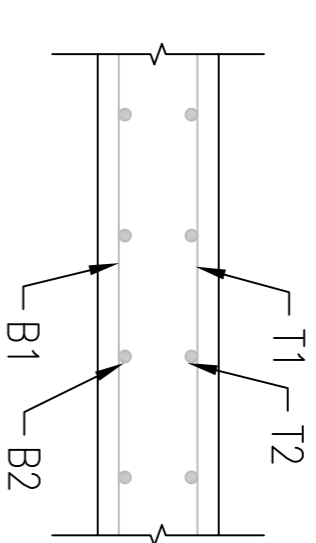


Total reinforcement weight on this drawing 5.055 tonnes

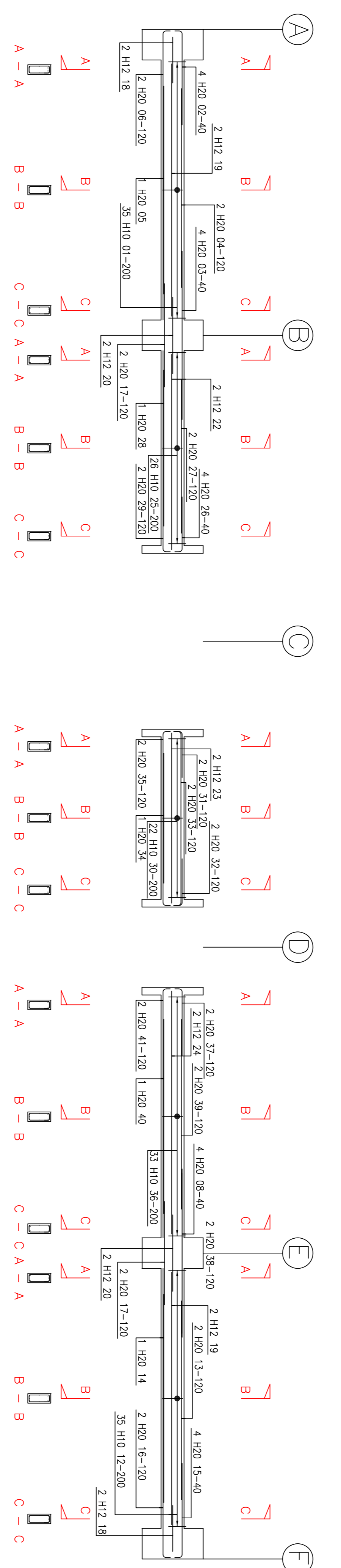
© J&A Theophilou Consulting Engineers (UK) Ltd  
The contents of this drawing may not be reproduced in whole or in part without the prior written permission of J&A Theophilou Consulting Engineers (UK) Ltd.

Notes

- This drawing is to be read in conjunction with all relevant Architects, Engineers and Sub-Contractor drawings, and technical specifications.
- Concrete shall be grade C32/40.
- Maximum aggregate size shall be 20mm.
- Concrete cover shall be 30mm throughout.
- Reinforcement steel shall conform to the specifications of BS 4449.
- Reinforcement listed on bar bending schedule 1200-39.
- Abbreviations:  
All: Alternatively placed  
B1 Bottom outer layer  
B2 Bottom inner layer  
T1 Top outer layer  
T2 Top inner layer  
Sig: Staggered  
UB U-Bars
- Reinforcement legs shall only be provided where indicated on the drawings, or after written permission by the Consulting Structural Engineer. The minimum length of the legs shall be 40 x bar diameter.
- Contractor shall ensure the temporary stability of all members during construction works.
- Spacers and chairs shall be provided in accordance to BS 7973.
- Reinforcement bars to be locally adjusted for openings up to 500mm.
- In case of any discrepancies between the drawing details or bills, refer to Engineers for clarification. Unilateral decisions by the Contractor are not acceptable.



1 Gridlines 1, 2, 4, 5  
Scale: 1:75



2 Gridline 3  
Scale: 1:75

Client			
London Constructions			
J&A THEOPHILOU CONSULTING ENGINEERS (UK) LTD			
46-48 East Smithfield, London, E1W 1AW			
E: ajseng@theophilou.com, W: www.theophilou.com			
Project Name			
Six Story Building			
Drawing Title			
RC Details to First Floor Beams - Level 1			
Sheet 1 of 2			
J&A Drawing Number			
1200-39			
Client Drawing Number			
Paper Size			
A1	Scale	Drawn by	Checked by
	1:100	AT	JT
Status			
Preliminary	Date	Revision	
	25/03/2018	P1	